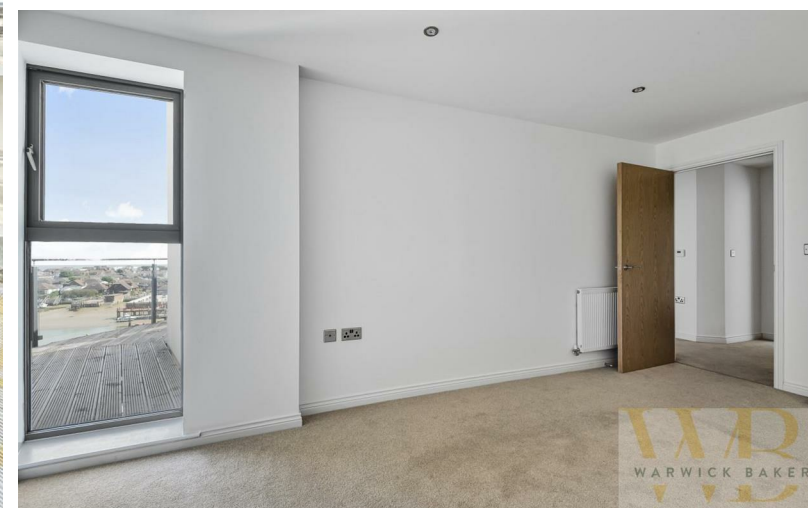




96 Mariner Point Brighton Road | | Shoreham-By-Sea | BN43



ESTATE AGENT



96 Mariner Point Brighton Road | | Shoreham-By-Sea | BN43 6DH

£420,000

*** £420,000 ***

WARWICK BAKER ESTATE AGENTS ARE DELIGHTED TO OFFER TO THE MARKET THIS 2 DOUBLE BEDROOM APARTMENT ON THE FOURTH FLOOR WITH SOUTH EASTERLY ASPECT BALCONY AND RIVERS VIEWS. THE PROPERTY IS AVAILABLE NOW AND HAS BASEMENT PARKING FOR ONE CAR.

FISHERMAN'S KNOT 730 SQ FT - 2 BEDROOMS - SIXTH FLOOR - EASTERLY ASPECT

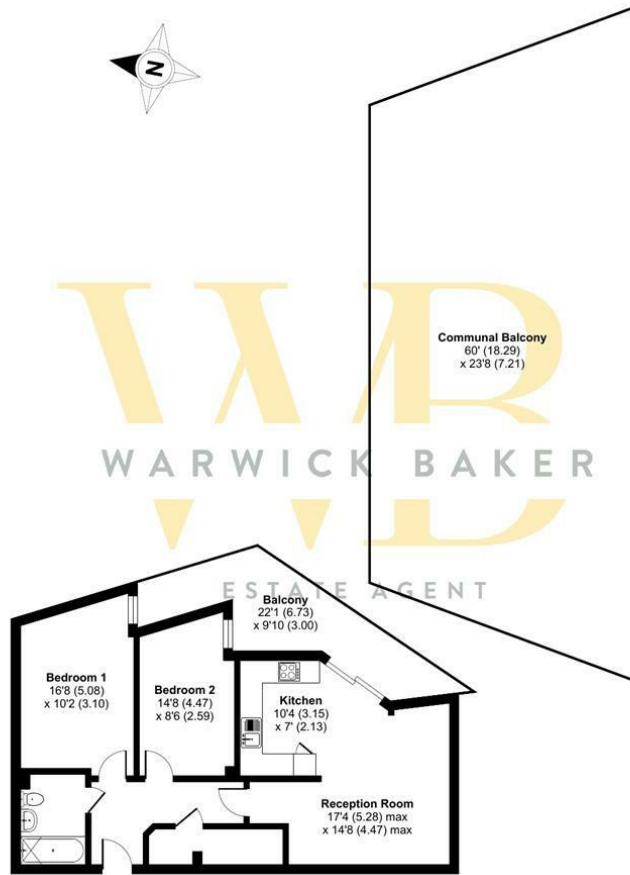
RIVER FRONT DEVELOPMENT WITH STUNNING VIEWS - CALL NOW FOR MORE DETAILS 01273 461144

- LUXURY NEW BUILD APARTMENT
- 2 DOUBLE BEDROOMS
- AUDIO ENTRY SYSTEM
- MODERN CONTEMPORARY FINISH
- UNDERGROUND PARKING
- 10 YEAR GUARANTEE
- DIRECT RIVER & SEA VIEWS
- LIFT TO ALL FLOORS
- SOUTHERLY ASPECT BALCONY
- CLOSE TO MAINLINE RAILWAY STATION



Brighton Road, Shoreham-by-Sea, BN43

Approximate Area = 734 sq ft / 68 sq m
For identification only - Not to scale



FIRST FLOOR

Floor plan produced in accordance with RICS Property Measurement Standards incorporating International Property Measurement Standards (IPMS Residential). © rickwcom 2022. Produced for Warwick Baker Estate Agent Ltd. REF: 851136



Disclaimer

- * These particulars are intended to give a fair and substantially correct overall description for the guidance of intending purchasers and do not constitute an offer or part of a contract. Prospective purchasers and/or lessees ought to seek their own independent professional advice.
- * All descriptions, dimensions, areas, references to condition and necessary permissions for use and occupation and other details are given in good faith and are believed to be correct, but any intending purchasers should not rely on them as statements or representations of fact, but must satisfy themselves by inspection or otherwise as to the correctness of each of them.
- * All measurements are approximate

Energy Efficiency Rating		Environmental Impact (CO ₂) Rating			
Very energy efficient - lower running costs	Current	Potential	Very environmentally friendly - lower CO ₂ emissions	Current	Potential
(92 plus) A			(92 plus) A		
(81-91) B			(81-91) B		
(69-80) C			(69-80) C		
(55-68) D			(55-68) D		
(39-54) E			(39-54) E		
(21-38) F			(21-38) F		
(1-20) G			(1-20) G		
Not energy efficient - higher running costs			Not environmentally friendly - higher CO ₂ emissions		
England & Wales	EU Directive 2002/91/EC		England & Wales	EU Directive 2002/91/EC	